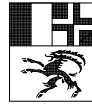


SCHWEIZERISCHE HAUPTSTRASSEN

Kanton Graubünden

MAPPE



BEILAGE 9

Strassennummer

H3b

| Strassenzug | Bauabschnitt: | km |
|----------------------------|--|---------------------------------|
| SILVAPLANA | | 0.00 |
| MALOJA- STRASSE | Strassenkorrektio Silvaplana Sils | 0.75 2.85 |
| CASTASEGNA | | 32.80 |

Effektive Baulänge: 2100 m

AUFLAGEPROJEKT

TYPISCHE QUERPROFILE 1:100

Plan Nr.: 3b.4718.006

Datum: Mai 2020

Kantonale Behörde:

Eingangsstempel:

Der Projektverfasser:

Die Regierung des
Kantons Graubünden

Caprez
Ingenieure AG
Via Vers Mulins 19
7513 Silvaplana

Tiefbauamt Graubünden



Via Vers Mulins 19, 7513 Silvaplana
081 838 77 00 / silvaplana@caprez-ing.ch
Via Serlas 23, 7500 St.Moritz
081 834 88 55 / stmoritz@caprez-ing.ch

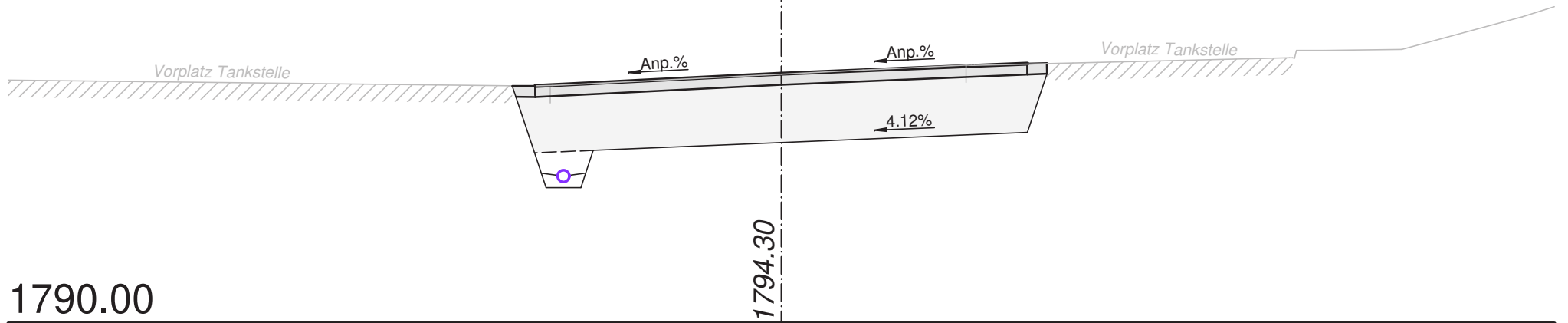
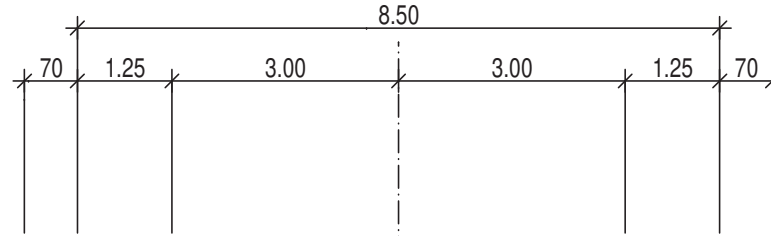
| | |
|-------------|-----------------|
| Plan Nr. | 4.006 |
| Projekt Nr. | 3.13.005 |

| | | | | | |
|--------------------------------------|-----------------------------------|-----------------------------------|----------------------------|-----------------------|-----------------------------------|
| Projektiert : M. Tschenett | Gezeichnet : A. Fagetti | Freigabe : M. Tschenett | Datum : Mai 2020 | Format : A4 | File Name: pb000730.npl |
|--------------------------------------|-----------------------------------|-----------------------------------|----------------------------|-----------------------|-----------------------------------|

| Index: | Änderung: | Datum: | Gezeichnet: | Freigabe: |
|--------|-----------|--------|-------------|-----------|
| | | | | |

0.000

1794.308

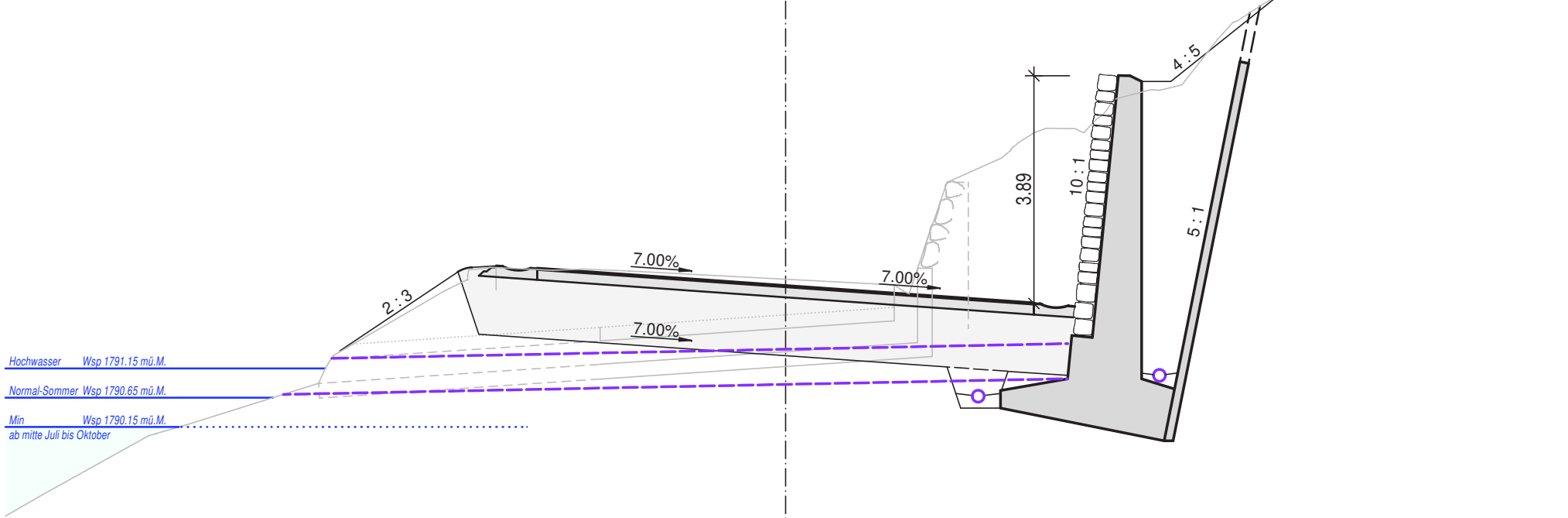
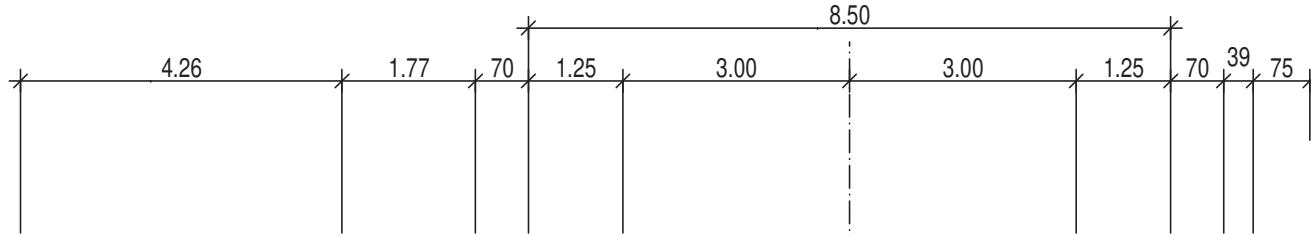


1790.00

130.000

1792.558

Sur Pass Mels



Hochwasser Wsp 1791.15 mü.M.

Normal-Sommer Wsp 1790.65 mü.M.

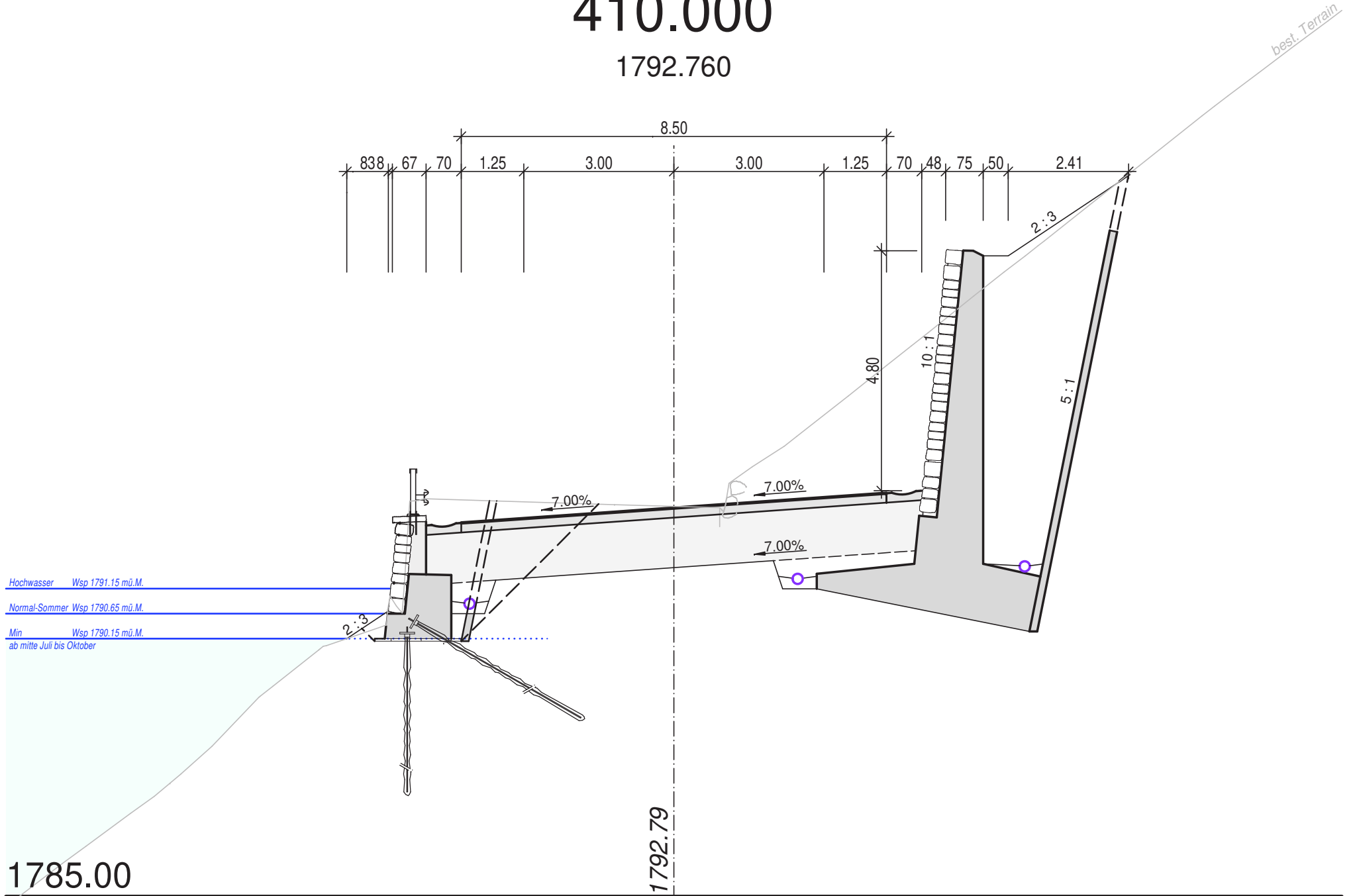
Min Wsp 1790.15 mü.M.
ab mitte Juli bis Oktober

1792.68

1785.00

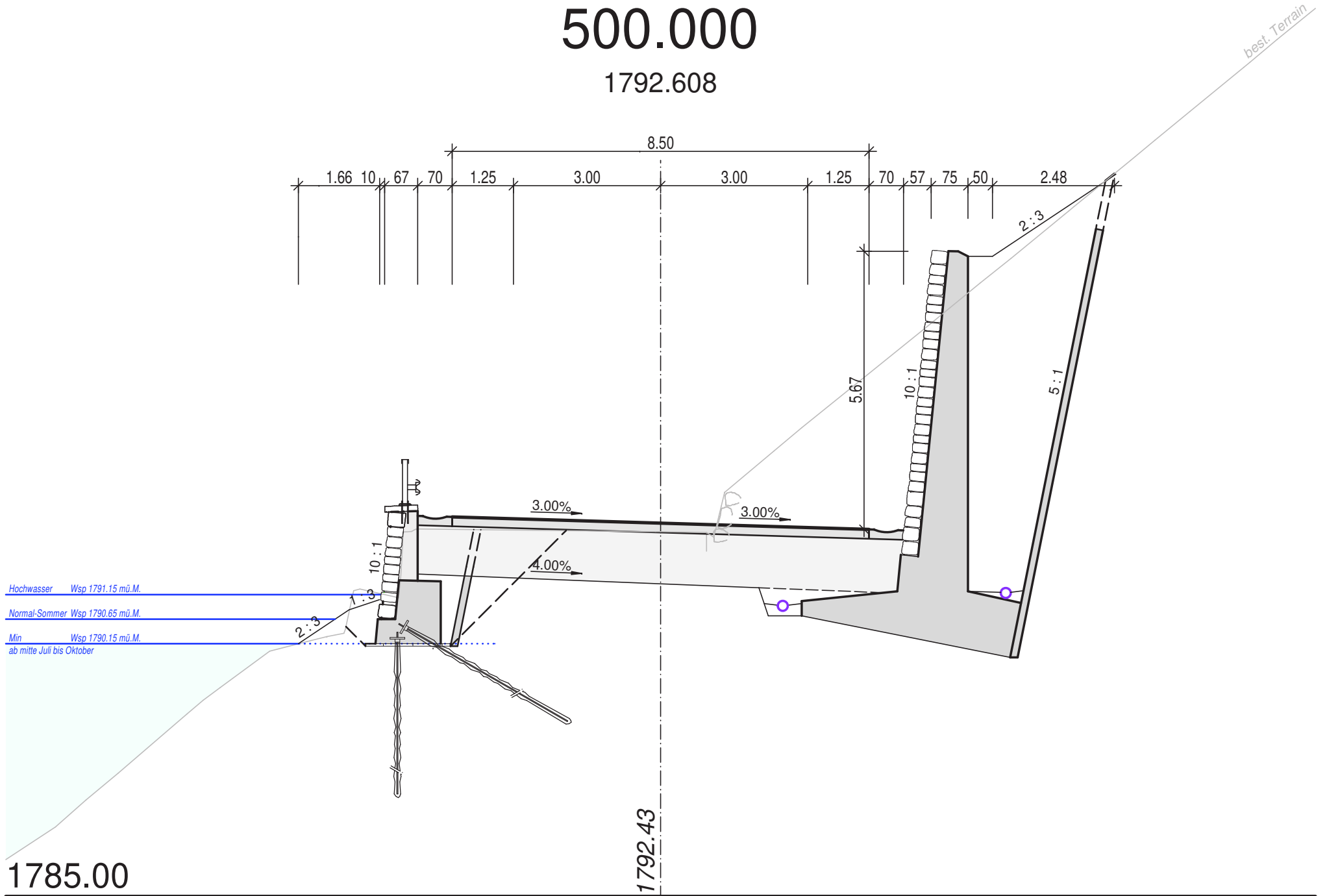
410.000

1792.760



500.000

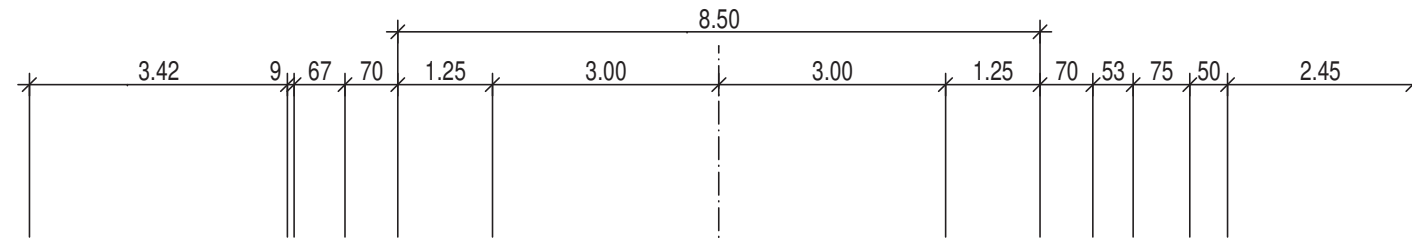
1792.608



610.000

1793.158

best. Terrain



Hochwasser Wsp 1791.15 mü.M.

Normal-Sommer Wsp 1790.65 mü.M.

Min Wsp 1790.15 mü.M.
ab mitte Juli bis Oktober

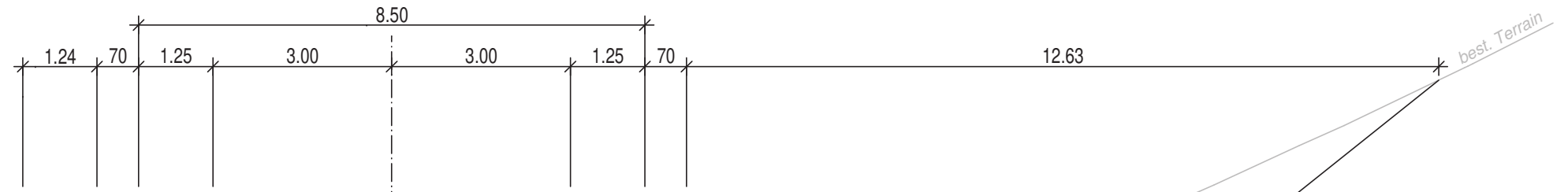


1780.00

1792.98

637.000

1793.287



Hochwasser Wsp 1791.15 mü.M.

Normal-Sommer Wsp 1790.65 mü.M.

Min Wsp 1790.15 mü.M.
ab mitte Juli bis Oktober

Fels

4.21%

4.21%

4.21%

4 : 5

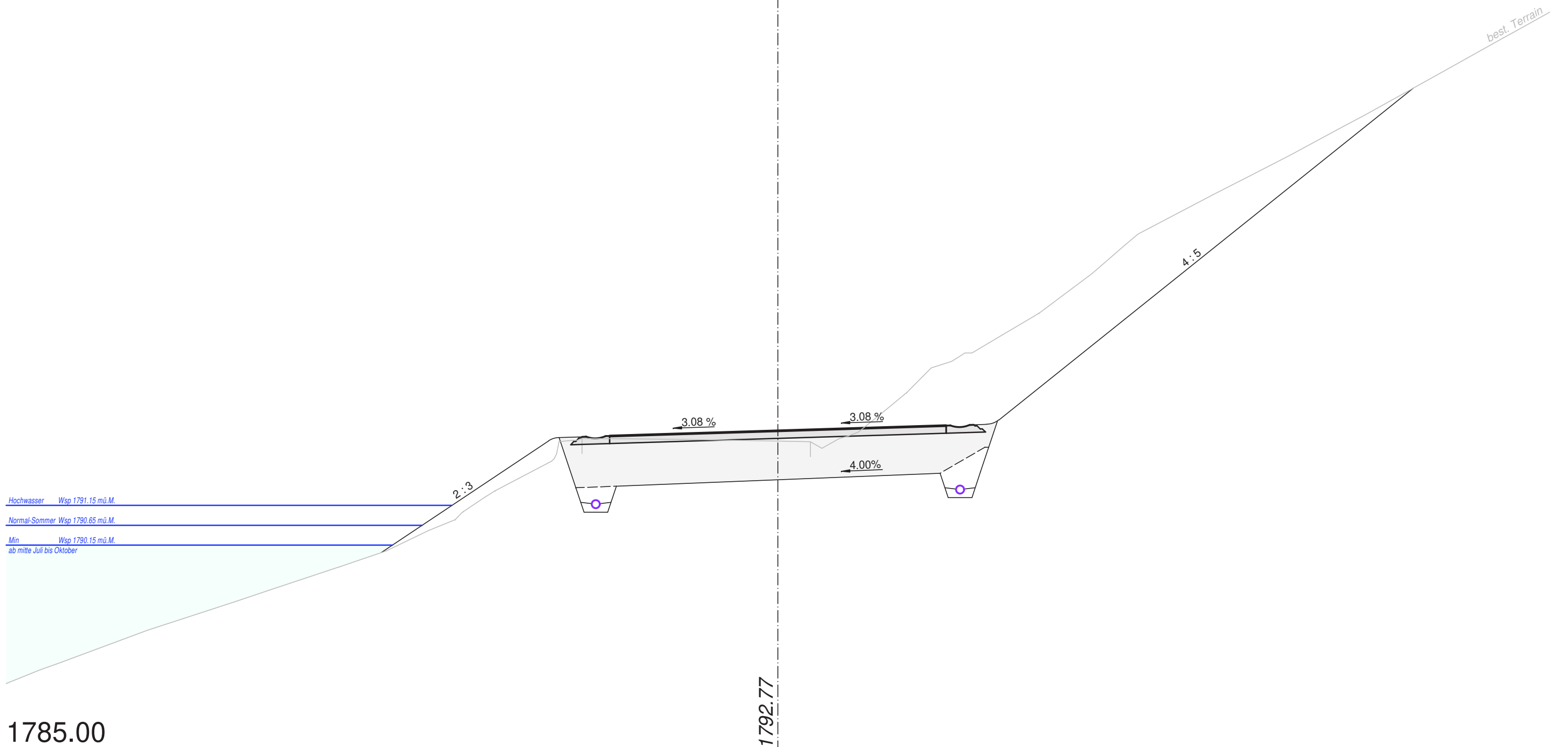
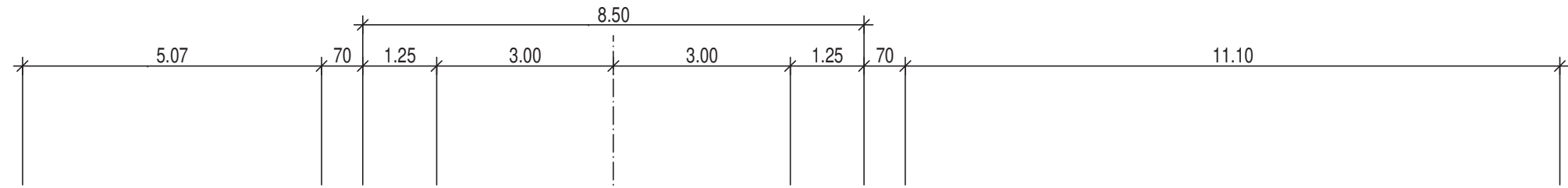
best. Terrain

1780.00

1793.31

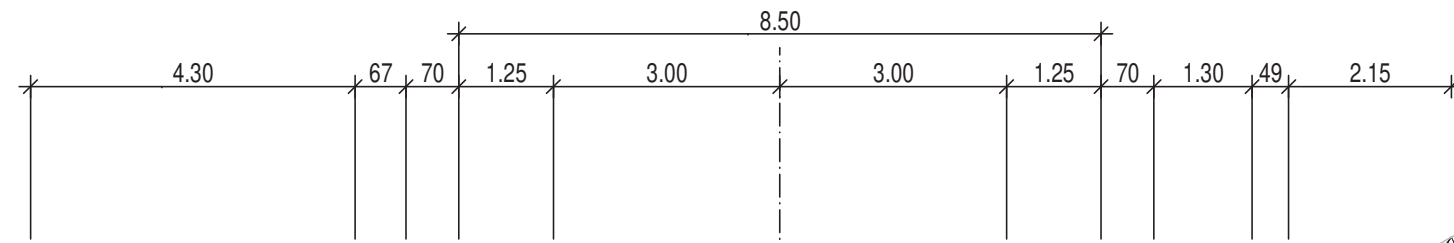
710.000

1793.033



850.000

1792.733

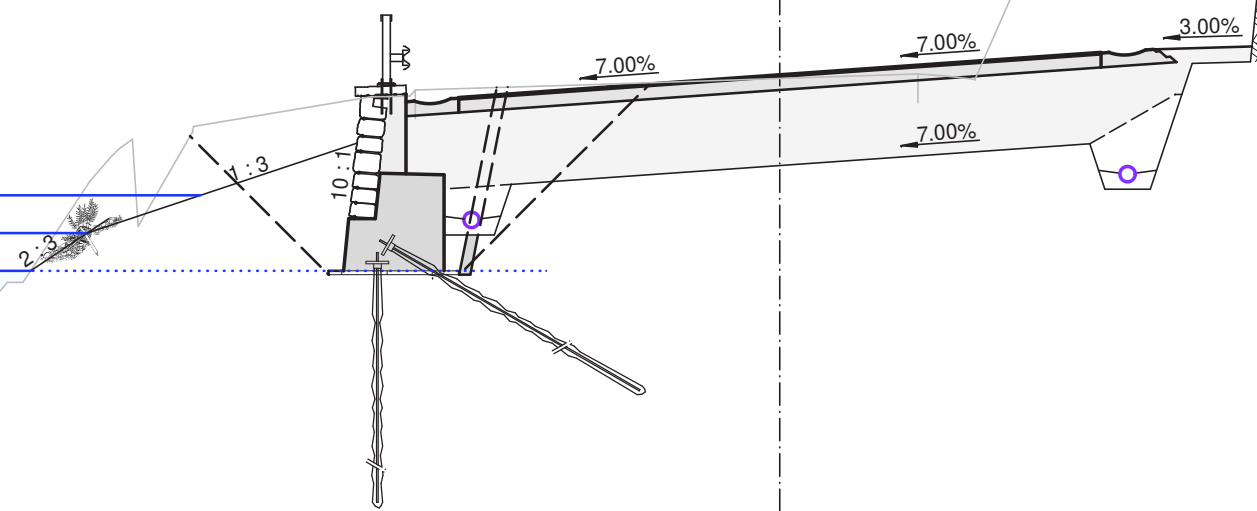
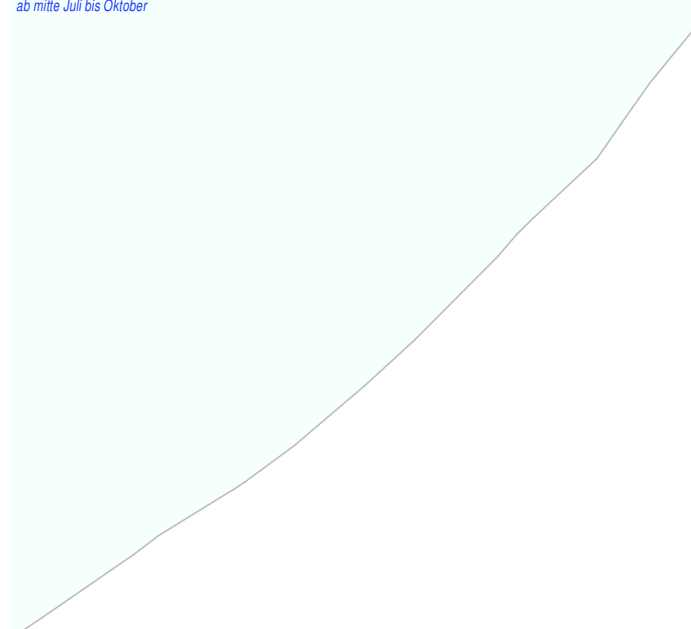


best. Terrain

Hochwasser Wsp 1791.15 mü.M.

Normal-Sommer Wsp 1790.65 mü.M.

Min Wsp 1790.15 mü.M.
ab mitte Juli bis Oktober

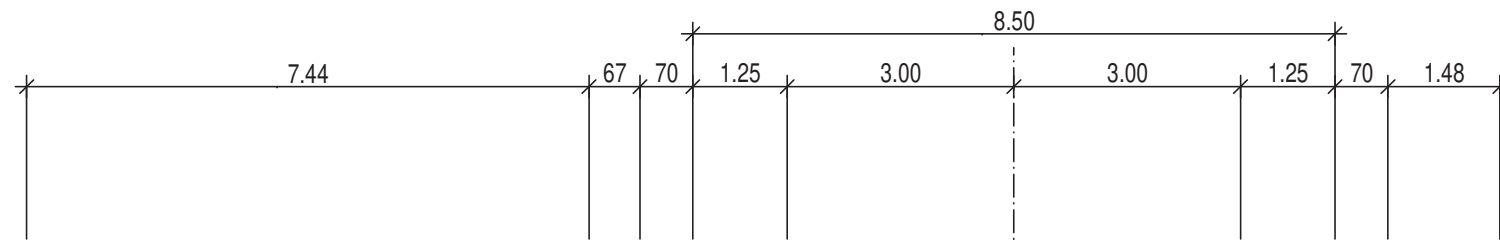


1780.00

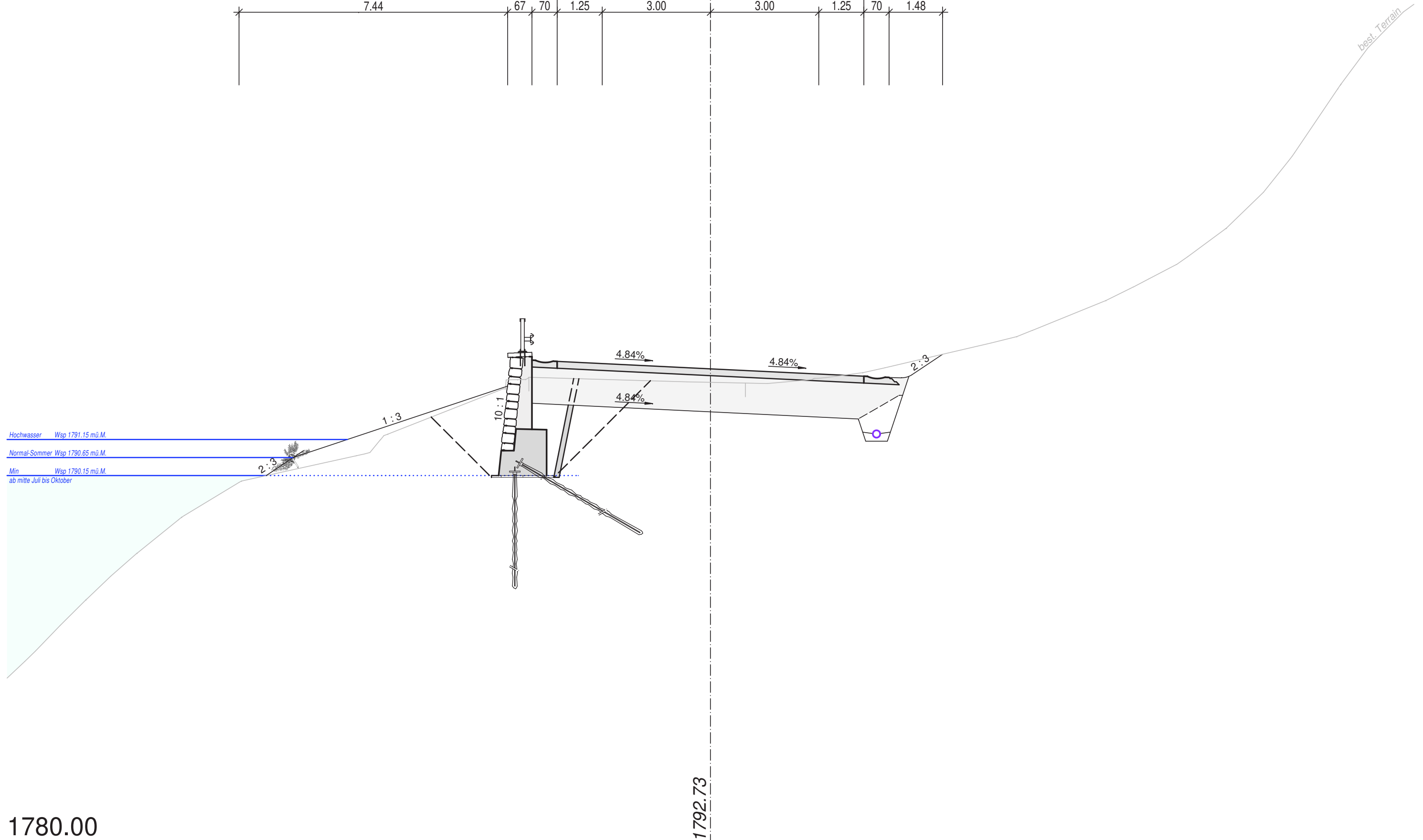
1792.70

925.000

1793.108

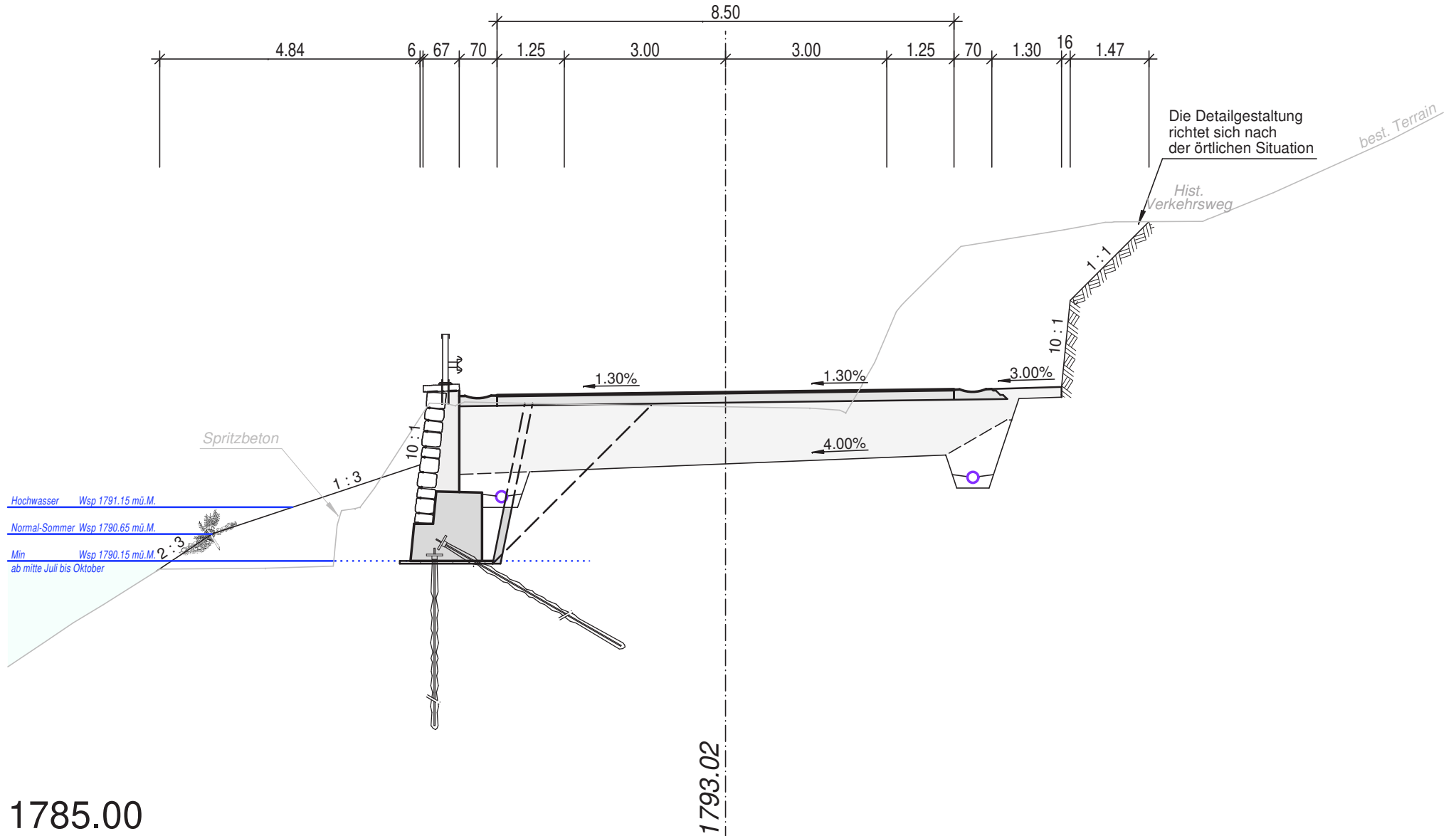


Hochwasser Wsp 1791.15 mü.M.
Normal-Sommer Wsp 1790.65 mü.M.
Min Wsp 1790.15 mü.M.
ab mitte Juli bis Oktober



960.000

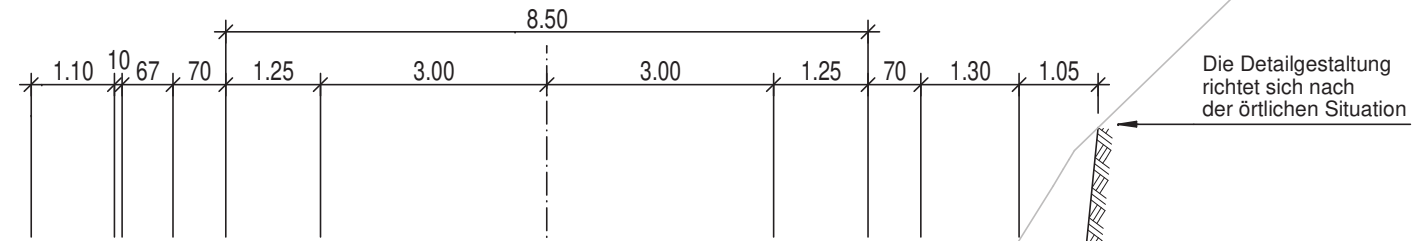
1793.283



1785.00

1210.000

1792.259



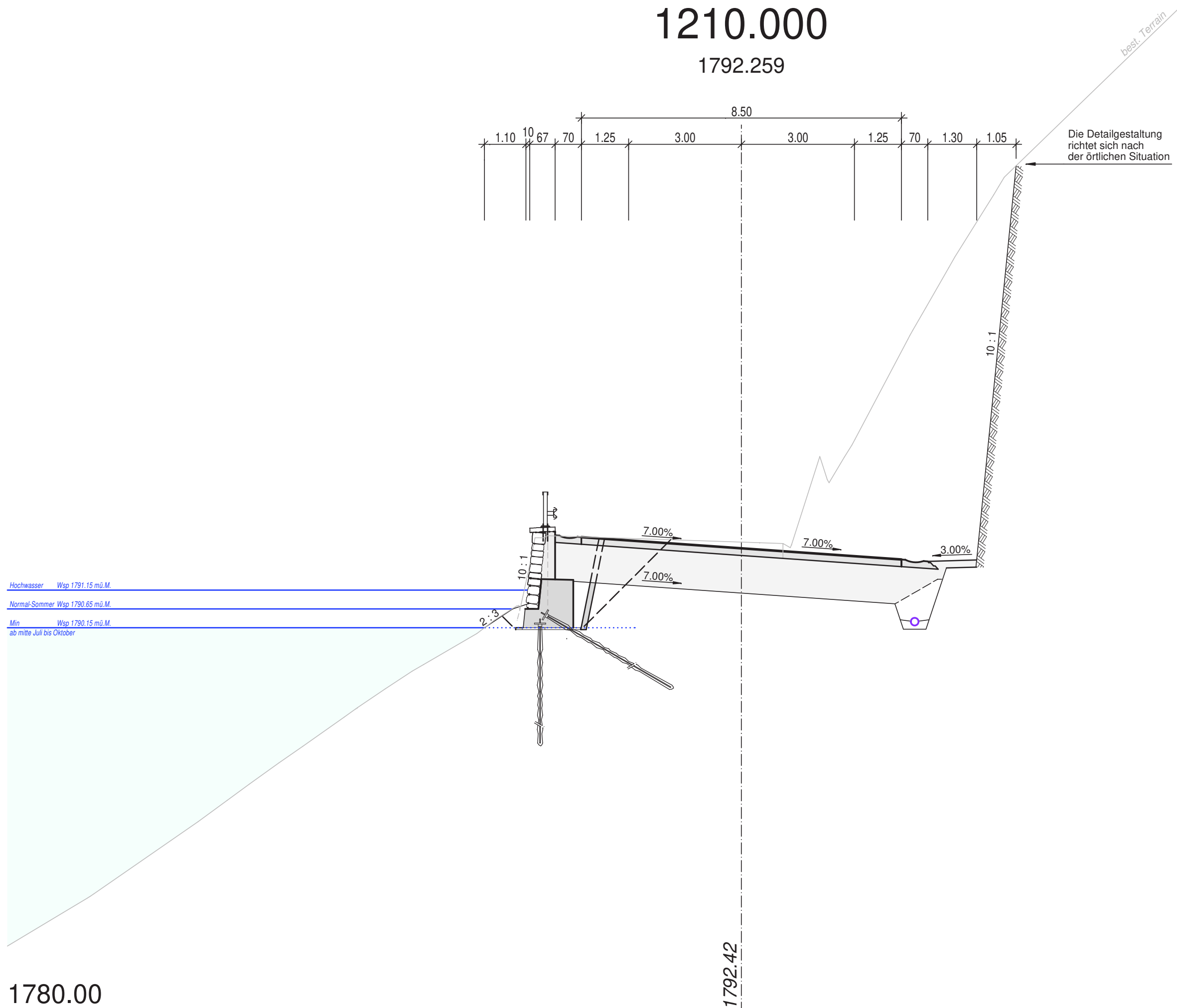
Hochwasser Wsp 1791.15 mü.M.

Normal-Sommer Wsp 1790.65 mü.M.

Min Wsp 1790.15 mü.M.
ab mitte Juli bis Oktober

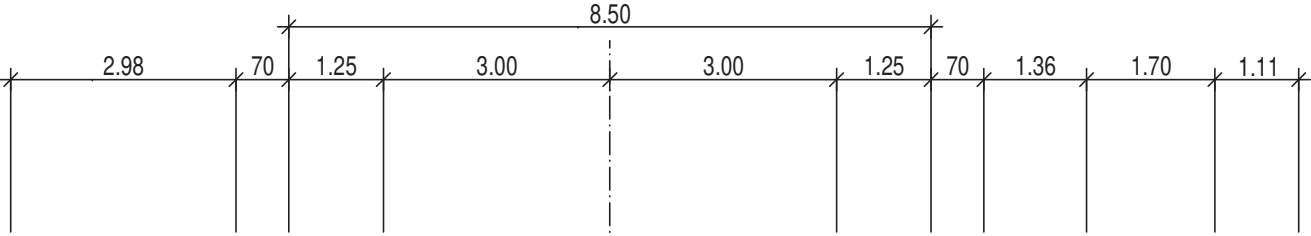
1780.00

1792.42

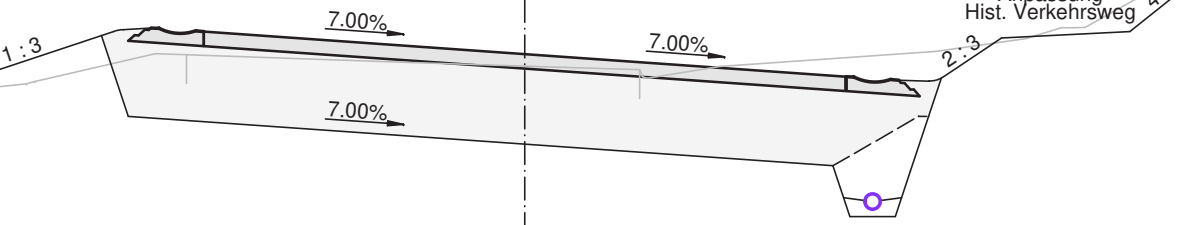


1313.000

1792.648



Hochwasser Wsp 1791.15 mü.M.
Normal-Sommer Wsp 1790.65 mü.M.
Min Wsp 1790.15 mü.M.
ab mitte Juli bis Oktober

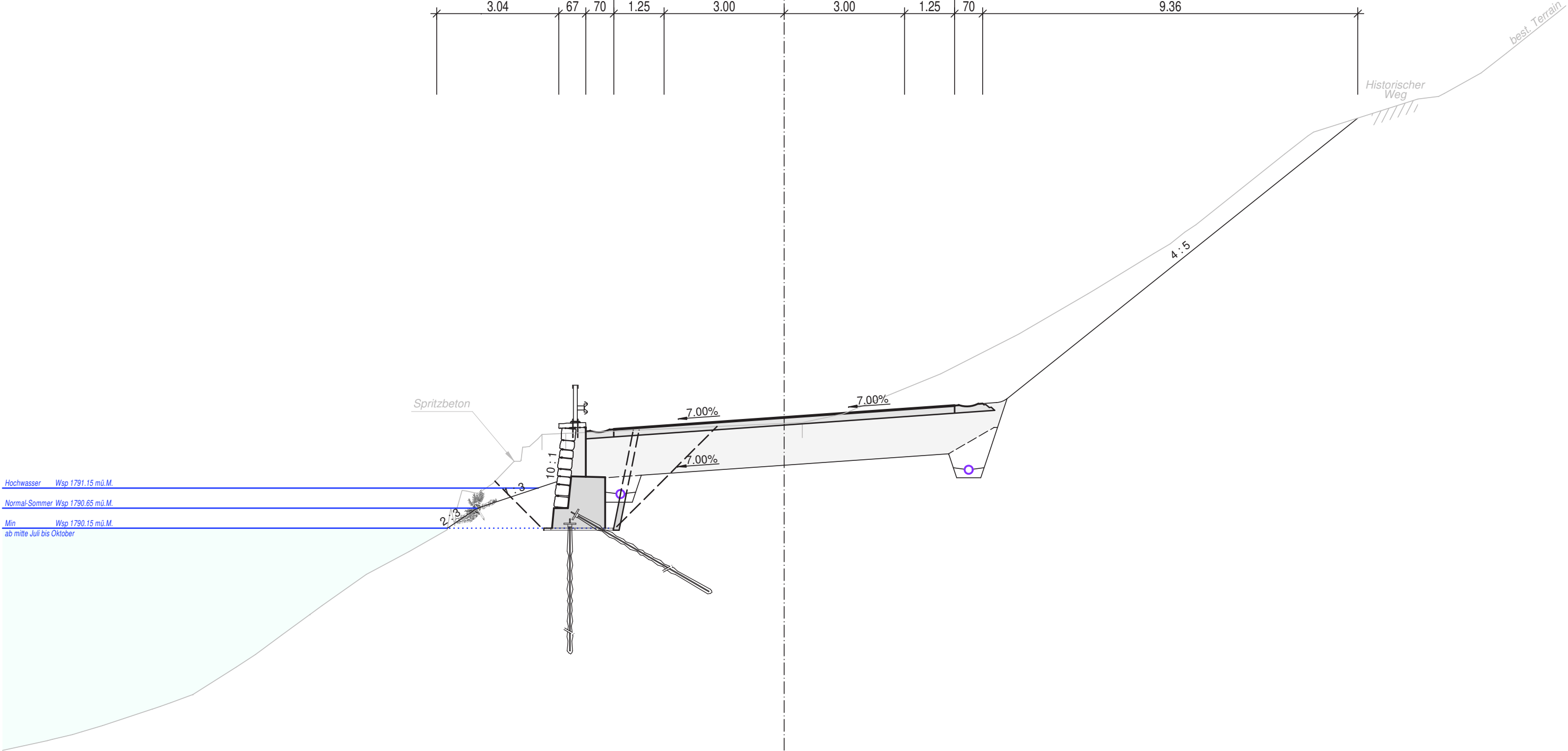
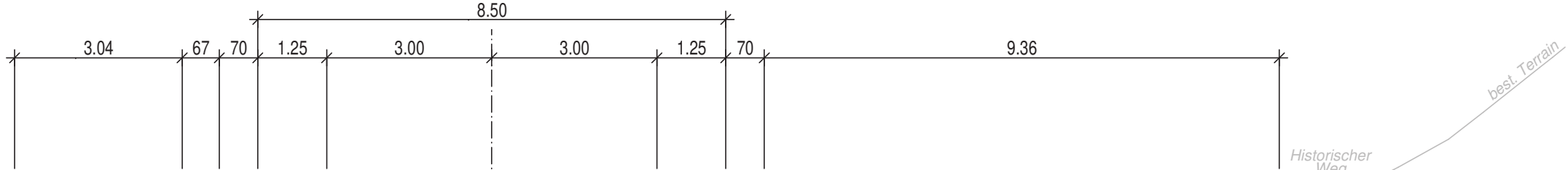


1780.00

1792.49

1370.000

1792.913



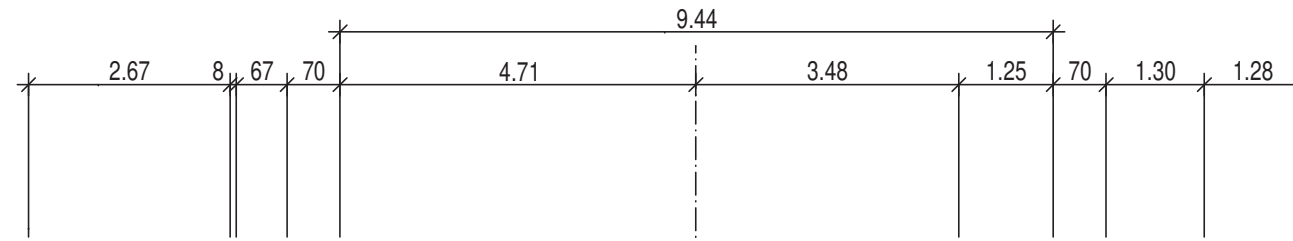
Hochwasser Wsp 1791.15 mü.M.
Normal-Sommer Wsp 1790.65 mü.M.
Min Wsp 1790.15 mü.M.
ab mitte Juli bis Oktober

1780.00

1792.77

1480.000

1792.538



Die Detailgestaltung richtet sich nach der örtlichen Situation

best. Terrain

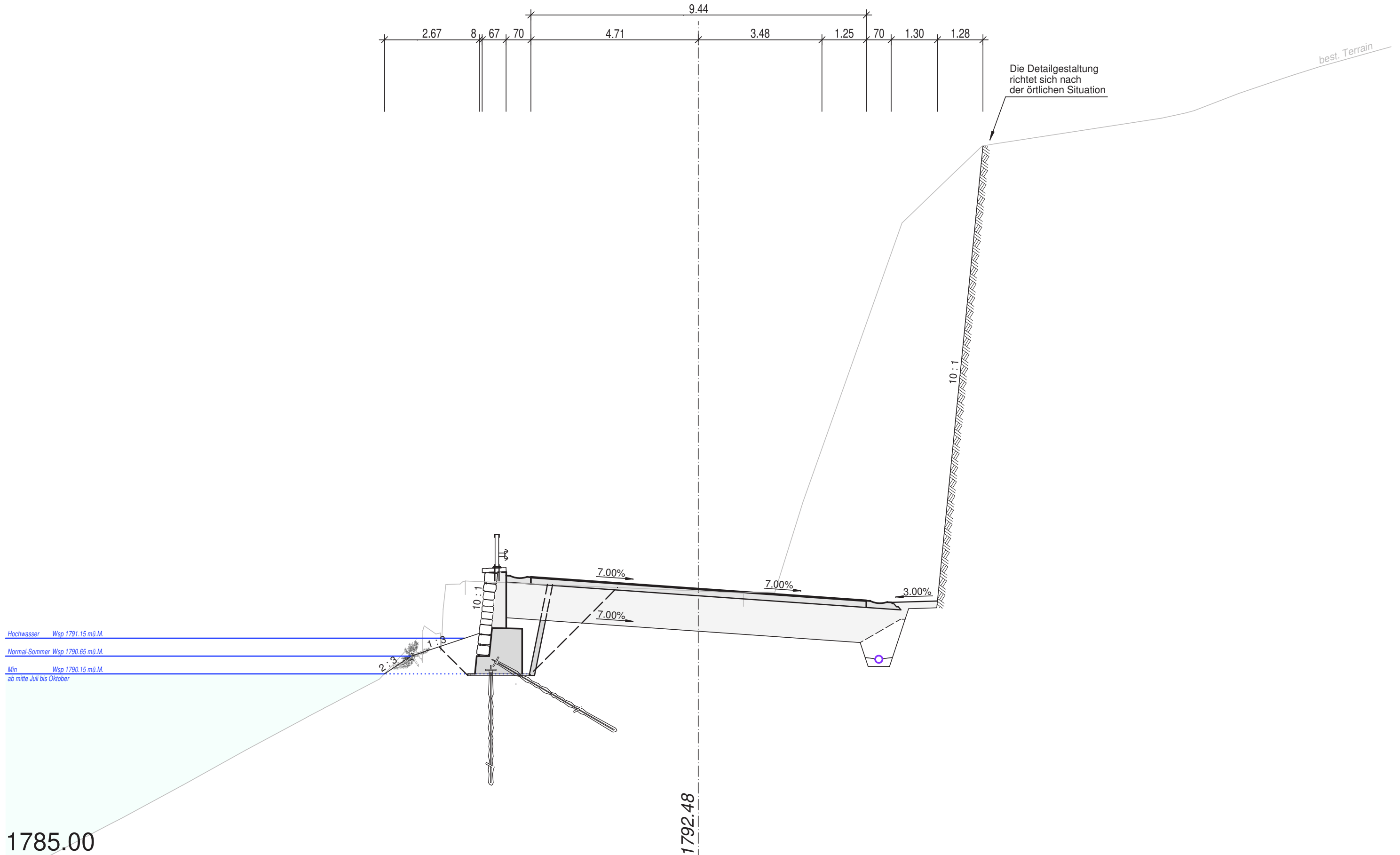
Hochwasser Wsp 1791.15 mü.M.

Normal-Sommer Wsp 1790.65 mü.M.

Min Wsp 1790.15 mü.M.
ab mitte Juli bis Oktober

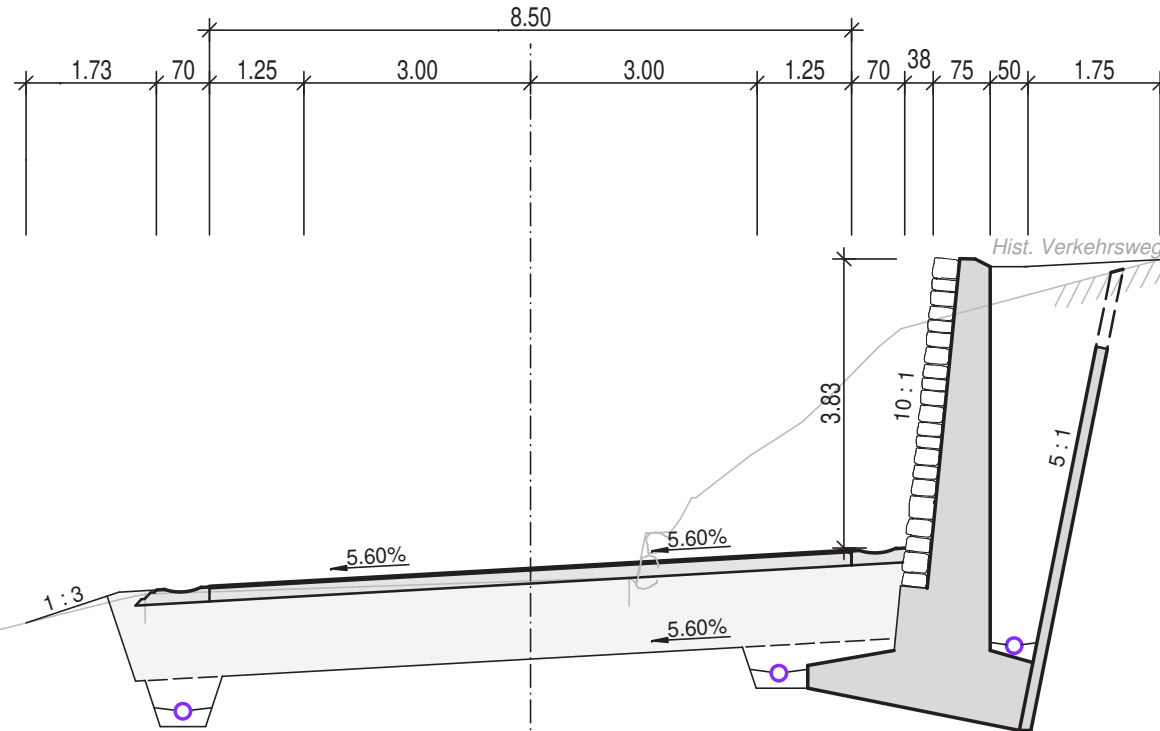
1785.00

1792.48



1670.000

1793.054



Hochwasser Wsp 1791.15 mü.M.

Normal-Sommer Wsp 1790.65 mü.M.

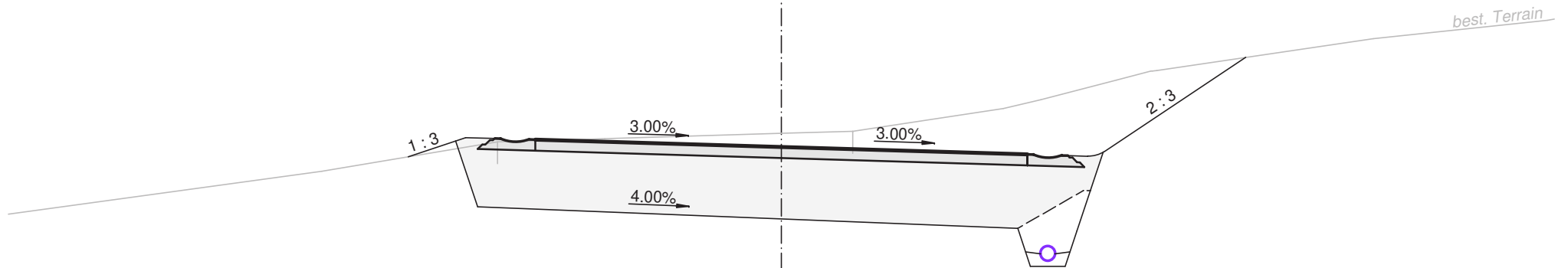
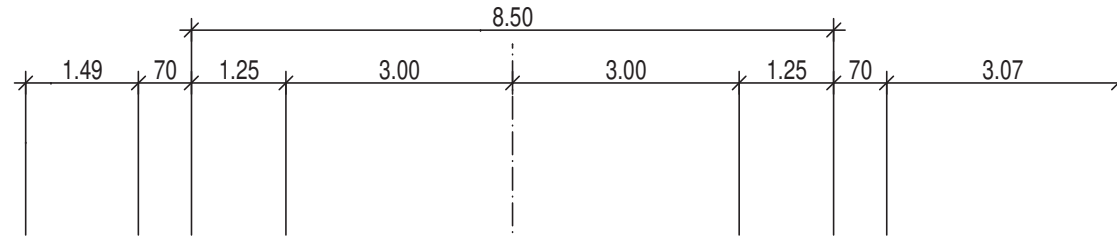
Min Wsp 1790.15 mü.M.
ab mitte Juli bis Oktober

1785.00

1792.90

1780.000

1792.683

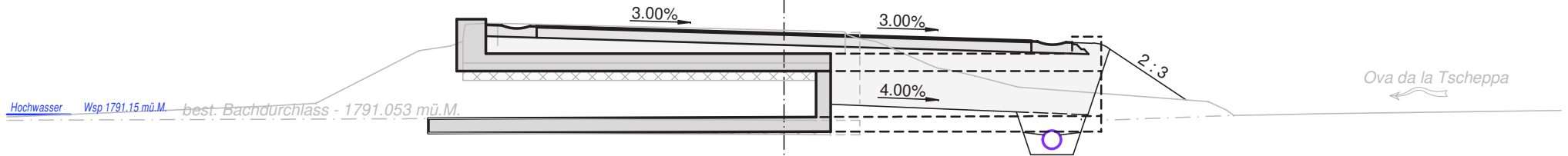
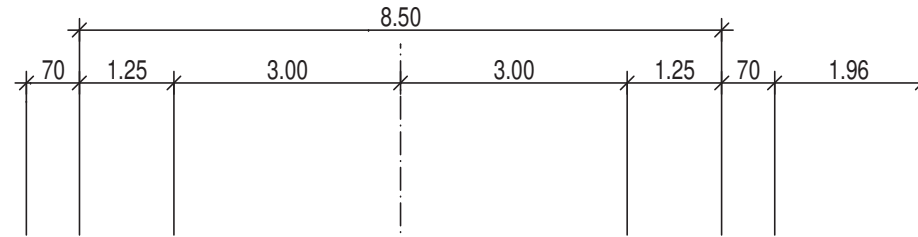


1785.00

1792.92

1860.000

1792.537

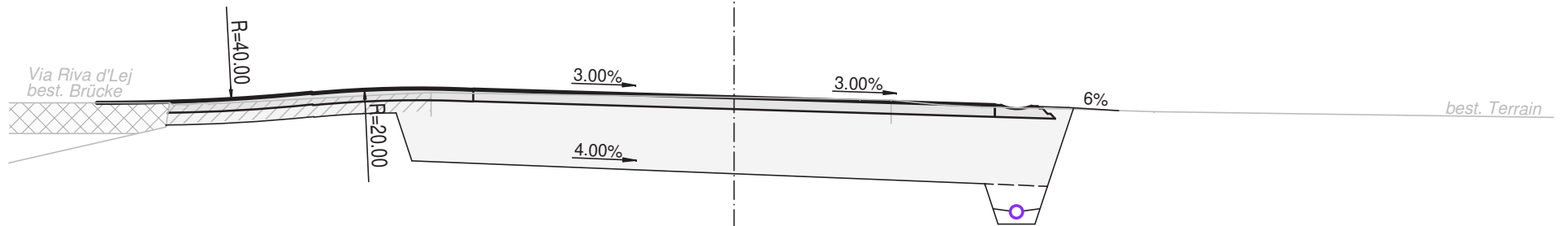
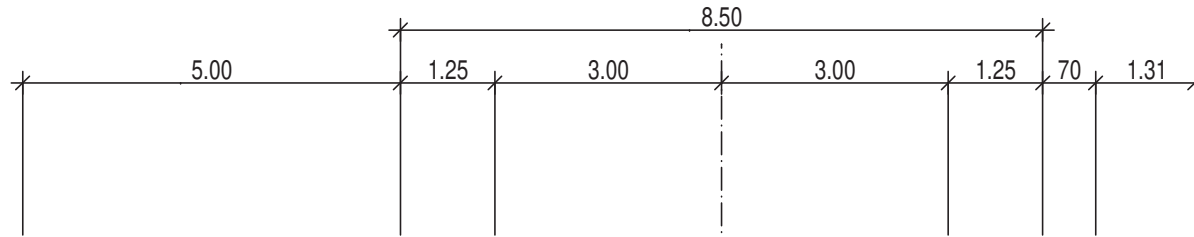


1785.00

1792.60

1980.000

1793.149



1785.00

1793.15