

Industrial Zone in San Vittore

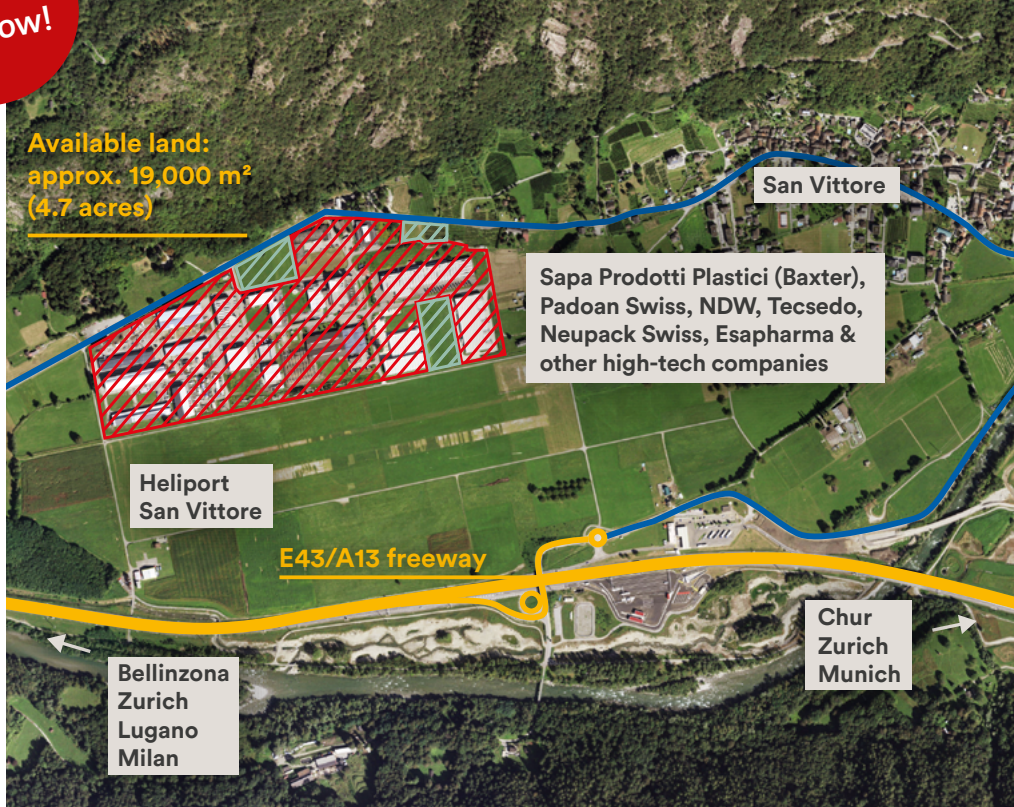
Room to grow!



Industrial Zone in San Vittore



Bolztec Inc.



Available land:
approx. 19,000 m²
(4.7 acres)

Heliport
San Vittore

E43/A13 freeway

Bellinzona
Zurich
Lugano
Milan

San Vittore

Sapa Prodotti Plastici (Baxter),
Padoan Swiss, NDW, Tecsedo,
Neupack Swiss, Esapharma &
other high-tech companies

Chur
Zurich
Munich

The industrial zone in San Vittore is with 180,000 m² (44 acres) the largest industrial zone in the Italian-speaking part of the Canton of Grisons and is located directly on the E43/A13 freeway (Munich/Stuttgart – Milan) and close to the Gotthard/NRLA transit axis E35/A2 (Zurich – Milan) as well as Milan airport. The industrial zone in the municipality of San Vittore is located in the agglomeration of Bellinzona, still has approx. 19,000 m² (4.7 acres) of industrial land available and is suitable for the settlement of companies with high added value and high job density in the life sciences, medtech and other high-tech industries.

Community
San Vittore

Owner
Public and private owners

Immediately available land
Various plots with a total of approx. 19,000 m² (4.7 acres)

Conditions
The selling price is to be negotiated with the respective owner. Acquisition in building lease is possible.

Permitted construction height
Depending on the plot: 7 m (23 ft) or 15 m (49 ft)

Contact
Economic Development Agency of the Canton of Grisons
Ringstrasse 10, 7001 Chur, Switzerland
T +41 81 257 23 42
info@awt.gr.ch, www.gr.ch/invest

Accessibility / Site Development

- Location: directly on the E43/A13 (Munich / Stuttgart – Milan) freeway and close to the Gotthard transit axis E35/A2 (Zurich – Milan) and Milan airport
- «Roveredo» exit of the E43/ A13 freeway (junction), «San Vittore» exit (intersection) with access roads via cantonal and local connecting roads
- Central: Bellinzona can be reached in 15 minutes and Zurich airport in another hour and 50 minutes via the New Railway Link through the Alps (NRLA).
- Heliport available
- Public transport connection directly at the industrial zone

Business location at the interface of the transit axes

