

Industrial Park Vial in Domat / Ems

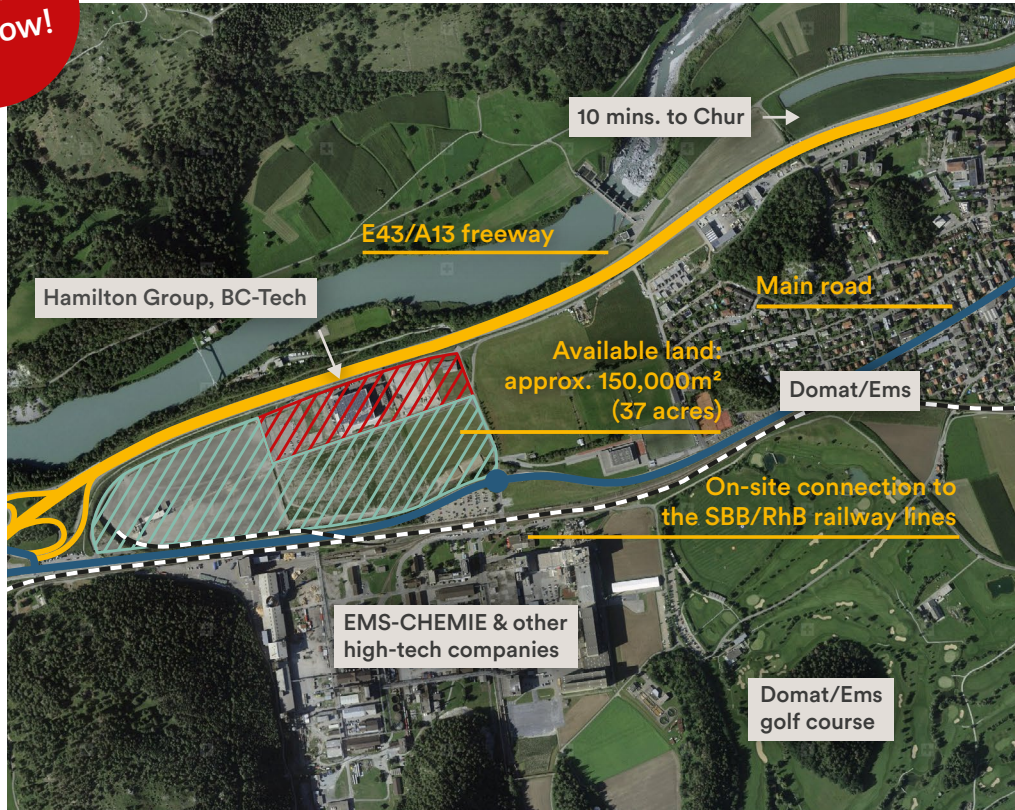
Room to grow!



Hamilton Group



Visualization Industrial Park Vial



Hamilton Group, BC-Tech

10 mins. to Chur

E43/A13 freeway

Main road

Available land: approx. 150,000m² (37 acres)

Domat/Ems

On-site connection to the SBB/RhB railway lines

EMS-CHEMIE & other high-tech companies

Domat/Ems golf course

The Industrial Park Vial in Domat / Ems is with 215,000 m² (53 acres) the largest purely industrial zone in the Grisons and at the same time one of the largest developed industrial zones in Switzerland. In a prime location and at attractive conditions the industrial park Vial offers approx. 150,000 m² (37 acres) of immediately available industrial land for innovation- and export-oriented companies in the fields of life sciences, medtech, biosciences, mechanical engineering, sensor technology, electronics, chemicals / plastics, ICT and other high-tech industries. The first settlement was made by the US-based medtech company Hamilton Ems AG in 2018.

Community
Domat / Ems

Owner
Canton of Grisons

Immediately available land
Approx. 150,000 m² (37 acres)

Pricing
The purchase price is CHF 270.- / m² (approx. USD 27.8 / ft²). The building lease rent is CHF 4.95 / m² / year (approx. USD 0.51 / ft² / year).

Permitted construction height
Up to 40 m (131ft), 50 m (164 ft) incl. construction structures

Contact
Economic Development Agency of the Canton of Grisons
Ringstrasse 10, CH-7001 Chur, Switzerland
T +41 (0)81 257 23 42
info@awt.gr.ch, www.gr.ch/invest

Accessibility / Site Development

- Location: Directly on the north-south axis E43 / A13 Munich / Stuttgart – Milan, linked to Zurich / Basel via the E60 / A3 freeway. Stuttgart, Munich and Milan are reachable in 2–3 h, the city of Zurich in approx. 75 minutes.
- Own freeway connection «Domat / Ems»
- Excellent site development: In addition to the conventional supply lines such as redundant electricity and water supply, gas and fiber optics, Domat/Ems also provides district heating, anergy network, an on-site connection to the international railway system and very good public transport connections.

Business location at the interface of the transit axes

