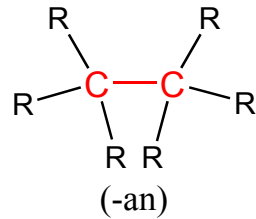
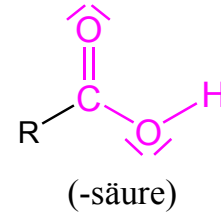


# Strukturen, Namen und "Endungen" einiger sehr wichtiger funktioneller Gruppen

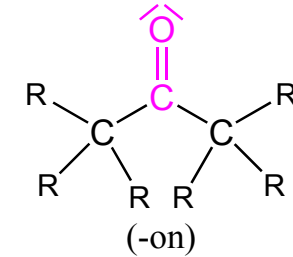
Alkane



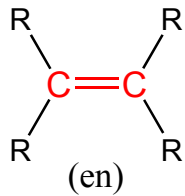
Carbonsäuren



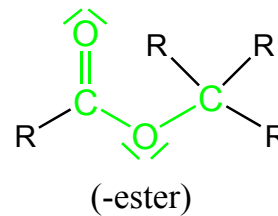
Ketone



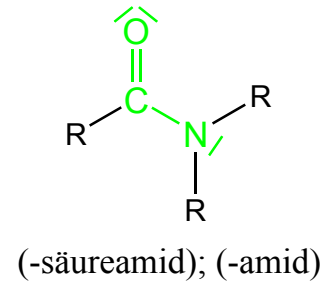
Alkene



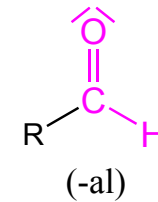
Carbonsäureester



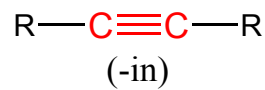
Carbonsäureamide



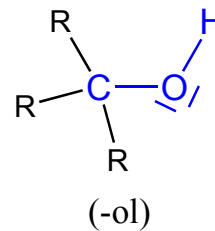
Aldehyde



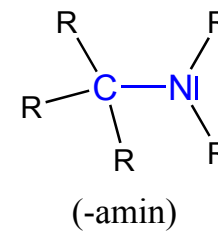
Alkine



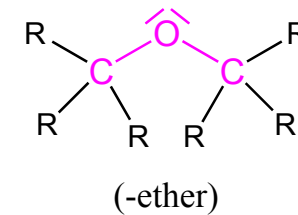
Alkohole



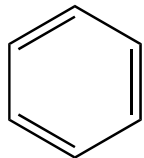
Amine



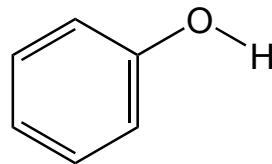
Ether



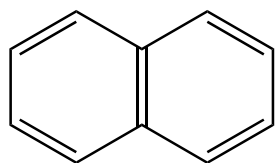
Arene (Auch Aromaten)



Benzen  
(-benzen)  
Alt: Benzol



Phenol  
(-phenol)



Naphthalen  
(-naphthalen)

R = H; Alkyl; Aryl

Peroxide

