







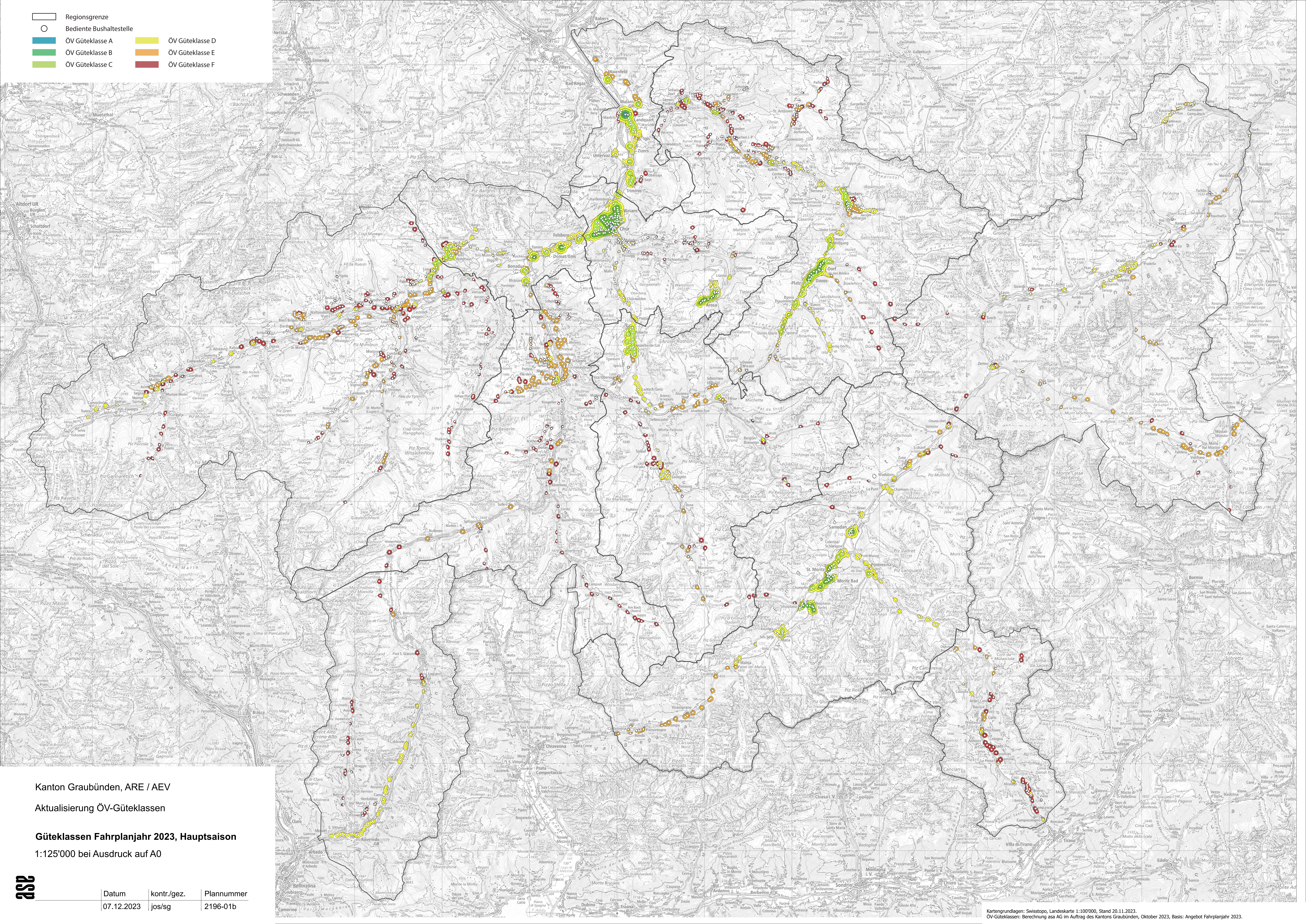


-  Regionsgrenze
-  Bediente Bushaltestelle
-  ÖV Güteklasse A
-  ÖV Güteklasse B
-  ÖV Güteklasse C
-  ÖV Güteklasse D
-  ÖV Güteklasse E
-  ÖV Güteklasse F



Kanton Graubünden, ARE / AEV

Aktualisierung ÖV-Güteklassen

Güteklassen Fahrplanjahr 2023, Hauptsaison

1:125'000 bei Ausdruck auf A0



Datum	kontr./gez.	Plannummer
07.12.2023	jos/sg	2196-01b