

# Tardisland Industrial Zone

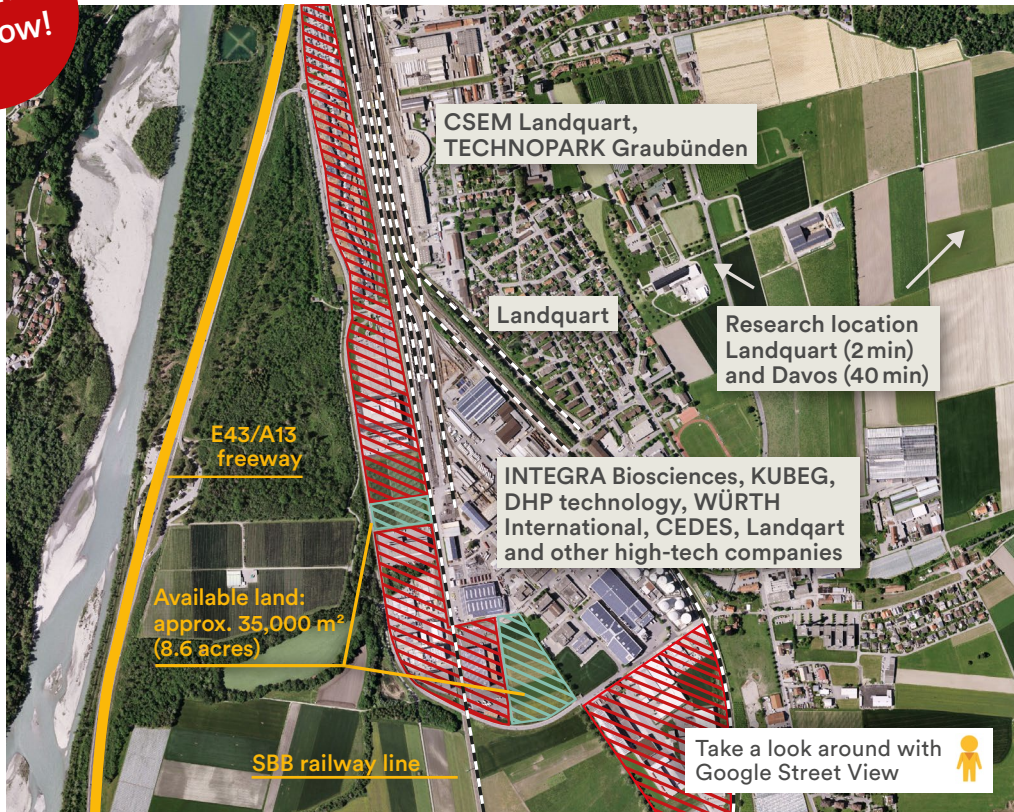
Room to grow!



INTEGRA Biosciences AG



Tardisland Industrial Zone



Tardisland is with 334,800 m<sup>2</sup> (82.7 acres) one of the largest industrial zones in South Eastern Switzerland and is located directly at the interface of the two transit axes E43 / A13 Munich / Stuttgart – Milan and E60 / A3 Zurich – Basel with connections to the Swiss federal railway system. Zurich and St Gallen can be reached within an hour; Chur, the capital of the Grisons, in a few minutes. In a prime location and at attractive conditions, Tardisland offers approx. 35,000 m<sup>2</sup> of immediately available industrial land for the settlement of innovation-oriented industrial and service companies.

## Communities

Zizers and Landquart

## Owner

Tardis, Public law company

## Immediately available land

approx. 35,000 m<sup>2</sup> (8.6 acres)

## Pricing

The indicative price for the purchase of developed land is approx. CHF 200.– / m<sup>2</sup> (approx. USD 20.1 / ft<sup>2</sup>).

## Permitted construction height

18 m (59 ft)

## Contact

Economic Development Agency of the Canton of Grisons  
Ringstrasse 10, CH-7001 Chur, Switzerland  
T +41 (0)81 257 23 42  
info@awt.gr.ch, www.gr.ch/invest

## Accessibility / Site Development

- Location: Directly at the Swiss federal railway SBB and the freeway E43 / A13 Munich / Stuttgart – Milan with connection to the freeway E60 / A3 Zurich – Basel
- Own freeway connection «Landquart»
- Stuttgart, Munich and Milan are reachable in 2 – 3 h, the city of Zurich in approx. 1 h.
- Traffic frequency: More than 14.8 million vehicles use this route each year (approx. 40,500 vehicles daily)
- Excellent site development for industrial and service companies.

## Business location at the interface of the transit axes

